



A Weekly Update
For The Employees of
North Central Health Care



NEWS YOU CAN USE



WEEKLY CONNECTION WITH GARY OLSEN

I hope you enjoyed last week's employee celebrations. It was a fun week with many activities. Thanks to all who helped make the week a huge success. The planning and energy that goes into these special events do not go unnoticed. Thank you! I also want to personally thank everyone, once again, for all you do. NCHC continues to demonstrate excellent Person-Centered Service because of excellent NCHC employees!

Congratulations to our NCHC Individual Placement and Support (IPS) staff who were recognized and received awards at the 2024 State of Wisconsin IPS Annual Meeting held in Wausau in July. Four different awards were earned by the IPS team and two of our NCHC employees also won individual awards:

2023 Fidelity Award: For earning 4 out of 5 possible points on the fidelity item Executive Team Support

2023 Fidelity Award: For earning the high score of 5 on the fidelity item Integration with Treatment Teams: Frequent Contact

2023 Fidelity Award: For earning a high score of 5 on the fidelity item Community-Based Services

2023 Excellence Award: For the highest average employment rate in 2023 of 65%

Mandy Schmidt received the IPS Employment Specialist Champion for engaging and advocating for job seekers, collaborating with professionals, and building relationships in your community.

Chrissy Seidler was awarded the IPS Champion award for her commitment to the IPS principles, providing high-quality services, and developing consistent and robust programming.

These are very high honors and I want to recognize these individuals and those who work in the IPS program for their outstanding work and Person-Centered Service in winning these prestigious awards. These individuals truly show a dedication to our Core Values: *Accountability, Dignity, Integrity, Partnership, and Continuous Improvement.*

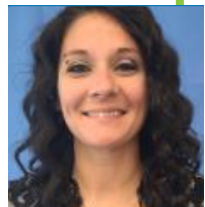
Gary D. Olsen

Gary Olsen
Executive Director

- IPS Awards 2
- Feeding Assistant Class ... 2
- 2024 Employee Celebration Week! 3-5
- Employee Milestones 6
- Employees on the Move! 7
- Foodie Forecast 8-9



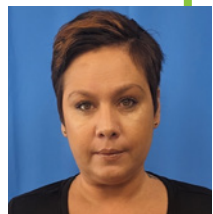
Amy Pehlke, Youth Behavioral Health Hospital



Always going above and beyond to ensure patient and staff safety, Kind, compassionate, and very good with all patients.

Shared By: Sam Steppert

Natalie Montes, Safety & Security



Always steps in to de-escalate before it's even an opportunity. Remains calm with all patients.

Shared By: Sam Steppert

Occurrence Reporting Hotline Only significant or sentinel events requiring immediate notification to this hotline.
x4488 or 715.848.4488



PHOTO OF THE WEEK



Christine Seidler was awarded the IPS Champion Award.

COMMUNITY TREATMENT IPS TEAM AWARDS

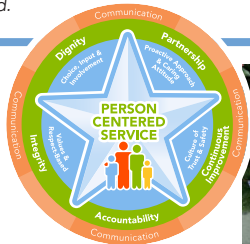
Congrats to the Individual Placement and Support (IPS) staff who were recognized and received awards at the 2024 State of Wisconsin IPS Annual Meeting held in Wausau in July. Four different awards were earned by the IPS team (above) and two of our NCHC employees also won individual awards. The IPS Team includes Kevin Traeder, Cecelia Upton, Mandy Schmidt, Christine Seidler, Candy Hable, Chrystal Lopez, and Amber Powell (not shown).



Mandy Schmidt received the IPS Employment Specialist Champion Award.

FEEDING ASSISTANTS CLASS GRADUATES MVCC News

Congrats to the new class of Feeding Assistants at Mount View Care Center. Employees in this 8-hour class learned the essentials of assisting residents in the nursing facility with eating and drinking. These hospitality aides are now able to assist residents with dining and provide the best in Person-Centered Service!



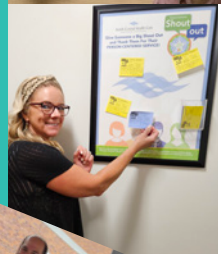
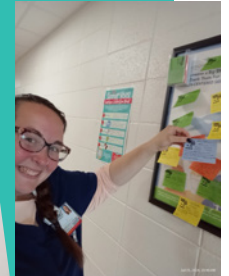
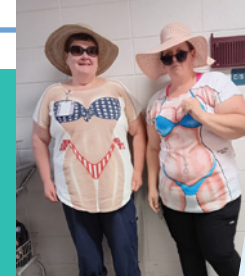


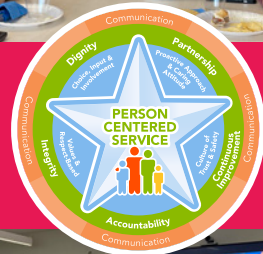
JULY 22-26

2024 Summer Vibes

Employee Celebration Week









2nd Quarter 2024 - April, May & June

Celebrating Employee Milestones



We would like to honor these employees who celebrated their milestone anniversary in the 2nd Quarter of 2024. Let us all take a moment to express our heartfelt gratitude and admiration for these employees and their remarkable achievements and loyalty. Their relentless pursuit of excellence has not only contributed to their personal growth but has also helped elevate North Central Health Care to new heights. Thank you for all you do for NCHC, for those we serve and for our communities.



Frances Lee..... Behavioral Health Prof II
Jamie Cherek..... LPN
Tatiana Garduno..... CNA
Lindsay Krueger..... Mental Health Therapist
Raeanne Sciborowski Case Manager I

Deborah Harris..... Housekeeping Aide
Marinette Santos Godleske ... Cook
Jonnie Pierschalla-Zastrow... LPN
Cheryl Woods..... RN
Tapanga Woller LPN



Laurie Bauer CNA
Melissa Winterfeldt..... CNA



Mariola Robers..... CNA
Michelle Oxendorf..... LPN
Lindsey Napierala..... RN
Dezirae Lakota..... RN



Tanya Zaloudek
 Mental Health &
 Substance Use
 Therapist



Jill Nelson
 Purchasing Agent



Jacquelyn Bant
 CNA

Congratulations!

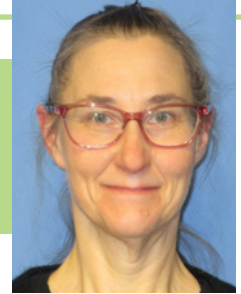


employees on the move

Congratulations to these employees for their recent transfer or promotion!

congrats!

Catherene Krautkramer transferred from Cook in Food Services reporting to Kristy Lemmer to Laundry Worker in Laundry reporting to Mat Beyer effective 07/21/2024.



Tom Onan transferred from Quality Specialist in Safety & Security to Compliance Officer/Risk Manager in Compliance reporting to Gary Olsen effective 07/21/2024.

Let's Go to the Fair!

Food, Fun, Friends...What More Can You Ask For?



Volunteers Wanted for the Wisconsin Valley Fair in Wausau!

Mount View Care Center will be taking residents to the Fair in August and Volunteer Services is looking for volunteers to assist residents at the outings.

Volunteers will provide our residents with an opportunity to enjoy a wonderful community event. It would be a one-on-one experience where volunteers will push residents in their wheelchairs around the fairgrounds taking in the sights, sounds, and smells. We would provide the transportation to and from the facility.

A \$5 meal stipend will be provided. You can bring additional funds for extras, if you wish.

If you know of anyone that is looking for volunteer hours or a teen or adult group that likes to participate in community service projects, please share this need with them.

This is an event our residents look forward to and we cannot do it without the assistance of volunteers.

- All volunteers must be 13 years of age or older and be able to push a wheelchair.
- You do not have to be a current volunteer. You will just have to sign a confidentiality agreement.
- Each volunteer will receive a ticket into the fair that can be used again later that day.

Mount View Care Center Fair Outing Volunteering

Wednesday, July 31 • Thursday, August 1 • Friday, August 2

Interested In Helping With This Fun Activity?

Please contact the Volunteer Office at 715.848.4450 or volunteer@norcen.org. Thank you!



Sign up online at <https://bit.ly/VolunteeratFair>



Marathon County Employees Credit Union

VISA Balance Transfer Special Going On Now!

VISA SPECIAL

4.99% APR for 19 months on balance transfers!
Valid now through 9.7.2024

NO TRANSFER FEE!

Additional details apply. Call 715.261.7680.

Balance transfers completed by 9/7/2024 will receive 4.99% APR for 19 months from date of transfer. After promotional time frame expires, remaining balances will migrate to the standard APR applicable on your account. Contact credit union for complete details.

APR = Annual Percentage Rate. All loans are subject to MCECU'S normal credit requirements.

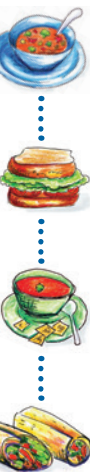
Apply Online @ www.mcecu.org

Don't already have a MCECU Credit Card? Contact Us to Apply!

culoans@co.marathon.wi.us
715-261-7680

400 East Thomas Street • Wausau, WI 54403

Proudly Serving NCHC Employees and Their Family Members Since 1965.



WHAT'S FOR LUNCH?

WAUSAU CAMPUS EMPLOYEE CAFETERIA OPEN TO ALL NCHC & WAUSAU CAMPUS EMPLOYEES

BREAKFAST HOURS
8:30 AM – 10:30 AM

LUNCH HOURS
MONDAY – FRIDAY
10:30 AM – 1:30 PM
HOT FOOD BAR &
SALADS \$.45/OUNCE
(Weekdays Only)

GRAB-N-GO HOURS
MONDAY – FRIDAY
8:30 AM – 5:30 PM
WEEKENDS:
GRAB-N-GO ONLY

Daily Hot Sandwich Menu

FEATURING DAILY SPECIALS LIKE GRILLED BEEF & CHEDDAR, CHEESEBURGERS, BBQ SANDWICHES, TUNA MELTS, PIZZA & MORE!!
Make your own cold or hot sandwich with fixins' OR self-serve at the salad bar.

JULY 29 – AUGUST 2, 2024

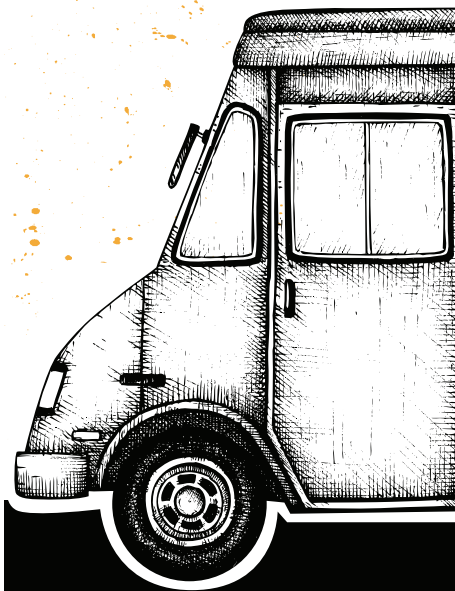
	MONDAY	TUESDAY	WEDS	THURSDAY	FRIDAY
DESSERT	Marble Cake & Frosting	Pie	Shirley Temple Poke Cake	Fresh Melon	Dirt Cup
SANDWICH	Chef's Choice	Chicken Supreme on a Bun	BBQ on a Bun	Monte Cristo Sandwich	Tuna Melt
SOUP	Chef's Choice	Cream of Potato Soup	Chicken Vegetable Soup	Taco Soup	Stuffed Green Pepper Soup
MAIN ENTRÉE	Beef Stroganoff Noodles Broccoli	BBQ Ribs Mac & Cheese Glazed Carrots	Beef Liver & Onions Mashed Potatoes Corn	Spaghetti & Meat sauce Green Beans Garlic Toast	Meatballs & Gravy Mashed Potatoes Mixed Vegetables

AUGUST 5 – 9, 2024

	MONDAY	TUESDAY	WEDS	THURSDAY	FRIDAY
DESSERT	Diced Watermelon	Brownie	Glazed Lemon Cake	Fruit Pizza	Strawberry Poke Cake
SANDWICH	Chef's Choice	Chicken Strips	Pizza	Nachos Supreme	Reuben
SOUP	Chef's Choice	Turkey Dumpling Soup	Cheddar Baked Potato Soup	French Onion Soup	Garden Vegetable Soup
MAIN ENTRÉE	Bratwurst On Bun Potato Salad Creamy Cucumber Salad	Bbq Beef On Bun Buttered Diced Potatoes Green Beans	Shepherd's Pie Dinner Roll Country Trio Veggies	Salisbury Steak Mashed Potatoes/Gravy Steamed Rutabagas	Baked Cod Baked Potato Sour Cream Mixed Vegetables



WAUSAU CAMPUS SUMMER FOOD TRUCKS



Wausau Campus
Mount View Care Center
LOT B Parking Lot

11 am – 1:30 pm

**Third Thursdays
of the Month**

August 22

**Food Truck
Announcement
to Come!**

We are still waiting on
confirmation.
Watch your email!

Please note: Food trucks are independently operated and may cancel with little notice. We apologize for any inconvenience.



THE BISTRO

NOW OPEN 7 DAYS A WEEK! | WEEKDAYS 7:30AM - 3PM | WEEKENDS: 9:30AM - 5PM

THE BISTRO WILL BE CLOSED ON WEEKENDS FROM 1-1:30PM TO ACCOMODATE STAFF BREAKS

*HOT FOOD IS AVAILABLE AT THE BISTRO DAILY UNTIL 2:30PM *



SPECIAL OF THE WEEK

Caprese Panini

MOZZ | TOMATO | BASIL
SPINACH | ITALIAN DRESSING

LATTE OF THE WEEK



Hazelnut Mocha

Nutty notes of Hazelnut paired with smooth espresso and steamed milk.

\$1 OFF LARGE LATTES EVERY MONDAY!

**Please note: All sales subject to Sales Tax.*

Ice Cream

ICE CREAM CONE1.50
ICE CREAM SUNDAE2.25



- build your own - BREAKFAST SANDWICH

EGG + CHEESE3.00
EGG, MEAT + CHEESE4.00

PICK YOUR BREAD

CROISSANT | BAGEL
ENGLISH MUFFIN

PICK YOUR MEAT

HAM | SAUSAGE | BACON